

CONTAINER CARRIER


CC-42G3S

CC-44G3S

CC-46G3S

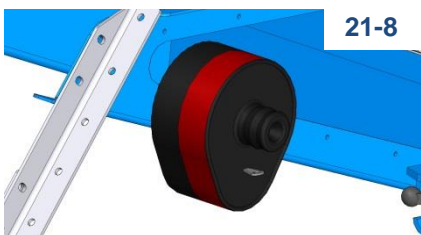
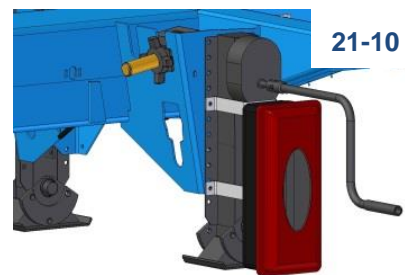
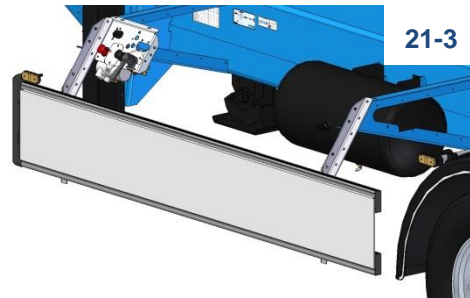
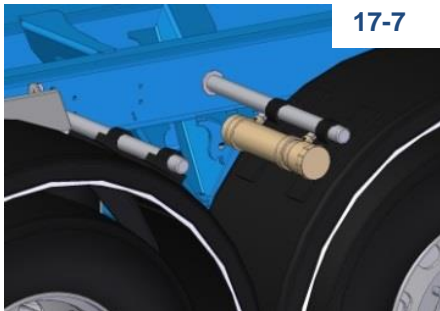
Technische gegevens




Technische Daten

Technical data
CC-42G3S
CC-44G3S
CC-46G3S

Technische gegevens	Technische Daten	Technical data	CC-42G3S	CC-44G3S	CC-46G3S
Geschikt voor	Geeignet für	Suitable for		20 ft centr. 2 x 20 ft	20 ft centr. 2 x 20 ft
			40 ft (HC)	40 ft (HC)	40 ft (HC)
Schoteldruk	Sattellast	Kingpin weight	16.000 kg	16.000 kg	16.000 kg
Maximale aslast per as	Max. Achslast per Achse	Maximal Axleload / axle	9.000 kg	9.000 kg	9.000 kg
Totaal toegestane massa	Gesamt zulässige Masse	Gross trailer weight	43.000 kg	43.000 kg	43.000 kg
Leeggewicht	Leergewicht	Empty weight	4.000 kg	4.200 kg	4.300 kg
Nuttig laadvermogen	Nutzlast	Payload	38.400 kg	38.800 kg	38.700 kg
Schotelhoogte	Sattelhöhe	Fifthwheel height	1.110 mm	1.110 mm	1.110 mm
Chassishoogte	Chassishöhe	Chassisheight	1.110 mm	1.110 mm	1.110 mm
Bandenmaat	Reifengröße	Tyresize	385/55 R22,5	385/55 R22,5	385/55 R22,5
Elektrische aansluitingen	Elektrische Anschlüsse	Electrical connectors	2x 7-pin + 1x 15 pin	2x 7-pin + 1x 15 pin	2x 7-pin + 1x 15 pin

OPTIES / OPTIONEN / OPTIONS



				
	Basis opties	Basis Optionen	Basic options	
11-4-15	Valx trommelremmen As 1 liftas manueel / automatisch	Valx Trommelbremsen Achse 1 Liftachse man. / automatisch	Valx drumbrakes Axle 1 liftaxle manual / automatic	_____
19-55	Bandenmaat 385/55R22,5	Reifengröße 385/55 R22,5	Tyresize 385/55 R22,5	_____
19-B	Banden keus D-TEC 1 laags 2K natlak RAL 5015 / 9005	Reifen nach Wahl D-TEC 1 Schicht 2K RAL 5015 / 9005	Tyremake D-TEC choice 1-Layer coating 2K RAL 5015 / 9005	_____
09-1-2	Bovenzijde schooperen	Oberseite spritzverzinkt	Topside schooping	_____
21-5	2 Wielkeggen	2 Radkeile	2 Wheelwedges	_____
21-16	Containerstops	Containerstops	Containerstops	_____
	Comfort opties	Komfort Optionen	Comfort options	
11-4-8	VALX / Mercedes-Benz / SAF schijf BPW trommelremmen	VALX / Mercedes-Benz / SAF Scheibe BPW Trommelbremsen	VALX / Mercedes-Benz / SAF disc BPW drumbrakes	_____
11-2-17	laatste as naloop gestuurd As 1 aut. / handm. liftas, as 3 handm.	Letzte Achse nachlaufgelenkt A. 1 aut. / man. Liftachse, A. 3 man.	Last axle steeringaxle A. 1 aut./man. liftaxle, axle 3 manual	_____
19-65	Bandenmaat 385/65R22,5. Continental HTR2 /	Reifengröße 385/65 R22,5 Goodyear LHT II / GT /	Tyresize 385/65 R22,5 Michelin XTE3	_____
19-7-3	Alcoa Durabright 6 alu velgen	Alcoa Durabright 6 alu Felgen	Alcoa Durabright 6 alloy rims	_____
09-1-1	Volledig schooperen Standard Coating in RAL 3002,	Völlig spritzverzinkt RAL 5002, RAL 5010, RAL 5015,	Full schooping RAL 7016, RAL 7021, RAL 9005	_____
09-6-SP	sputen 2-laags 2K natlak naar keuze	Lackieren 2 Schicht 2K nach Wahl	2-Layer coating 2K customer choice	_____
09-4-3	naven + doppen sputen	Naben und Kappen lackiert	Hubs and caps painted	_____
15-12	6x ronde 3-kamer lampen, alles LED	6x Runde 3-Kammerleuchten LED	6 Round lights, LED	_____
15-NS-14	4x ronde 3-kamer lampen, bol	4x Runde 3-Kammerleuchten, Birne	4 Round lights, bulbs	_____
07-3	Kingpenslothouder	Halter für Königszapfenverriegelung	Holder for kingpinlock	_____
07-5	Gevaarlijke stoffen bord	Gefahrgutschild	ADR sign at the rear, orange	_____
07-NS-9	Reclameplaat	Werbungstafel Stahl am Heck	Steel plate at the rear, painted	_____
17-7	Documenten koker uit plastic.	Dokubox Kunststoff	Document tube	_____
17-21	Brede spatlap onder de bumper	Breiter Schmutzfänger	Mudflap under bumper	_____
21-10	Houder zonder 6 kg brandblusser	Halter ohne 6kg Feuerlöscher	Holder without 6kg fire extinguisher	_____
21-3	Zijbeplating witte trespa	Seitl. Unterfahrschutz Trespa, weiß	Trespa sidefenders, white	_____
21-8	Kingpinslot	Königszapfenverriegelung	Kingpinlock	_____
03-4-A	ADR-fabrikantverklaring	ADR Herstellerbestätigung	ADR Manufacturer certificate	_____
25-NS-2	LZV uitgevoerd en gekeurd	nur für NL	only NL	_____
17-2	ADR/VLG uitvoering incl certificaat	nur für NL	only NL	_____

